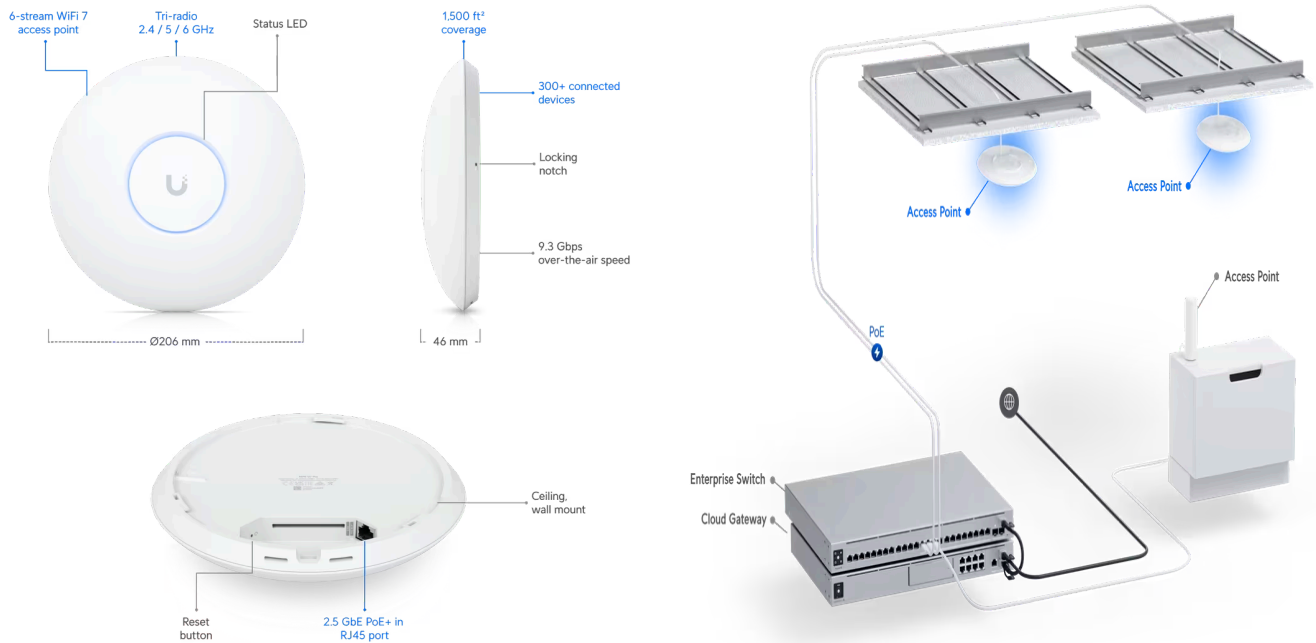




U7 Pro

U7-Pro



Mechanical

Dimensions	Ø206 x 46 mm (Ø8.1 x 1.8")
Weight	680 g (1.5 lb)
Enclosure material	Polycarbonate, metal
Mount material	Stainless steel (SUS304), galvanized steel (SGCC)

Hardware

Networking interface	(1) 1/2.5 GbE RJ45 port
Management interface	Ethernet
Power method	PoE+
Power supply	UniFi PoE switch 44—
Supported voltage range	57V DC
Max. power consumption	21W

Max. TX power	
2.4 GHz	22 dBm
5 GHz	26 dBm
6 GHz	23 dBm
MIMO	
2.4 GHz	2 x 2
5 GHz	2 x 2
6 GHz	2 x 2
Throughput rate	
2.4 GHz	688 Mbps
5 GHz	4324 Mbps
6 GHz	5765 Mbps
Antenna gain	
2.4 GHz	4 dBi
5 GHz	6 dBi
6 GHz	5.8 dBi
LEDs	White/blue
Button	Factory reset
Mounting	Wall/ceiling (Included)
Ambient operating temperature	-30 to 60° C (-22 to 140° F)
Ambient operating humidity	5 to 95% noncondensing
Certifications	CE, FCC, IC

Software

WiFi standards	802.11a/b/g/n/ac/ax/be
Wireless security	WPA-PSK, WPA-Enterprise (WPA/WPA2/WPA3/PPSK)
BSSID	8 per radio
VLAN	802.1Q
Advanced QoS	Per-user rate limiting
Guest traffic isolation	Supported
Concurrent clients	300+

Supported Data Rates

802.11a	6, 9, 12, 18, 24, 36, 48, 54 Mbps
802.11b	1, 2, 5.5, 11 Mbps
802.11g	6, 9, 12, 18, 24, 36, 48, 54 Mbps
802.11n	6.5 Mbps to 300 Mbps (MCS0 - MCS15, HT 20/40)
802.11ac (WiFi 5)	6.5 Mbps to 1.7 Gbps (MCS0 - MCS9 NSS1/2, VHT 20/40/80/160)
802.11ax (WiFi 6/6E)	7.3 Mbps to 2.4 Gbps (MCS0 - MCS11 NSS1/2, HE 20/40/80/160)
802.11be (WiFi 7)	7.3 Mbps to 5.7 Gbps (MCS0 - MCS13 NSS1/2, EHT 20/40/80/160/240/320)

Application Requirements

UniFi Network	Version 8.0.26 and later
UniFi OS	Version 3.2 and later